

Piano

SOUL MAN

MODT. Blues Rock
♩ = 116

(GTR. solo)

Handwritten musical notation for the first system. The top staff is for guitar, showing a melodic line with notes and rests. The bottom staff is for piano, showing a simple accompaniment with notes and rests. The key signature has two sharps (F# and C#), and the time signature is 4/4. The guitar part starts with a chord of E, followed by a series of notes. The piano part has a few notes in the first measure and rests in the second.

Handwritten musical notation for the second system. The top staff is for guitar, showing a melodic line with notes and rests. The bottom staff is for piano, showing a simple accompaniment with notes and rests. The key signature has two sharps (F# and C#), and the time signature is 4/4. The guitar part starts with a chord of E, followed by a series of notes. The piano part has a few notes in the first measure and rests in the second.

Handwritten musical notation for the third system. The top staff is for guitar, showing a melodic line with notes and rests. The bottom staff is for piano, showing a simple accompaniment with notes and rests. The key signature has two sharps (F# and C#), and the time signature is 4/4. The guitar part starts with a chord of E, followed by a series of notes. The piano part has a few notes in the first measure and rests in the second.

Handwritten musical notation for the fourth system. The top staff is for guitar, showing a melodic line with notes and rests. The bottom staff is for piano, showing a simple accompaniment with notes and rests. The key signature has two sharps (F# and C#), and the time signature is 4/4. The guitar part starts with a chord of E, followed by a series of notes. The piano part has a few notes in the first measure and rests in the second.

SOUL MAN - 2

(Gtr Fill) -

REPEAT 2x's. SVA ?

Handwritten musical notation for the first system. It consists of two staves. The top staff has a treble clef and a key signature of two sharps (F# and C#). The first three measures contain guitar fills indicated by diagonal lines. The fourth measure contains the chord E, and the fifth measure contains the chord D. The sixth measure contains the chord E. The seventh measure contains the chord A, and the eighth measure contains the chord B. The bottom staff contains a bass line with notes corresponding to the chords above.

(C)

Handwritten musical notation for the second system. It consists of two staves. The top staff has a treble clef and a key signature of two sharps. The first three measures contain guitar fills indicated by diagonal lines. The fourth measure contains the chord C, the fifth measure contains the chord G, the sixth measure contains the chord A, and the seventh measure contains the chord A/B. The bottom staff contains a bass line with notes corresponding to the chords above.

Handwritten musical notation for the third system. It consists of two staves. The top staff has a treble clef and a key signature of two sharps. The first measure contains a D chord with a circled 'D' and '(GTR.)' written above it. The second measure contains a B/C chord. The third measure contains a D chord. The bottom staff contains a bass line with notes corresponding to the chords above.

Handwritten musical notation for the fourth system. It consists of two staves. The top staff has a treble clef and a key signature of two sharps. The first measure contains a guitar fill. The second measure contains the chord F, the third measure contains the chord Eb, and the fourth measure contains the chord Ab. The bottom staff contains a bass line with notes corresponding to the chords above.

Handwritten musical notation for the fifth system. It consists of two staves. The top staff has a treble clef and a key signature of two sharps. The first measure contains a guitar fill with '(w/gtr.)' written above it. The second measure contains a vamp section with a circled 'E' and '(VAMP)' written above it, followed by a right-pointing arrow. The third measure contains the chord F, the fourth measure contains the chord Bb, and the fifth measure contains the chord F. The bottom staff contains a bass line with notes corresponding to the chords above.

BASS

SOUL MAN

MODT. BLUES ROCK 1=116

First staff of music in bass clef, key signature of one sharp (F#), and 4/4 time signature. It begins with a whole note chord F#2, followed by a half note G#3, a quarter note A3, and a quarter note B3. The second measure contains a whole note chord D2, and the third measure contains a whole note chord E2.

(5)

Second staff of music, starting with a circled '5'. It contains a sequence of eighth notes: F#3, G#3, A3, B3, C#4, D4, E4, F#4. The staff ends with a circled '4' and a repeat sign.

(A) (PLAY 3 TIMES)

Third staff of music, labeled '(A) (PLAY 3 TIMES)'. It contains a sequence of eighth notes: F#3, G#3, A3, B3, C#4, D4, E4, F#4. The staff is divided into four measures by repeat signs, with circled numbers 2, 4, 6, and 8 above the second, third, fourth, and fifth measures respectively.

(B)

Fourth staff of music, labeled '(B)'. It contains a sequence of eighth notes: F#3, G#3, A3, B3, C#4, D4, E4, F#4. The staff ends with a repeat sign.

(REPEAT 2x's)

Fifth staff of music, with the handwritten instruction '(REPEAT 2x's)' above it. It contains a sequence of eighth notes: F#3, G#3, A3, B3, C#4, D4, E4, F#4. The staff ends with a repeat sign.

(C)

Sixth staff of music, labeled '(C)'. It contains a sequence of eighth notes: F#3, G#3, A3, B3, C#4, D4, E4, F#4. The staff ends with a repeat sign.

(D)

Seventh staff of music, labeled '(D)'. It contains a sequence of eighth notes: F#3, G#3, A3, B3, C#4, D4, E4, F#4. The staff ends with a double bar line, a circled 'D', and a whole note chord F#2.

Eighth staff of music, containing a sequence of eighth notes: F#3, G#3, A3, B3, C#4, D4, E4, F#4. The staff ends with a repeat sign.

Ninth staff of music, containing a sequence of eighth notes: F#3, G#3, A3, B3, C#4, D4, E4, F#4. The staff ends with a repeat sign.

Bass - Saul Alan

Handwritten musical notation for Bass - Saul Alan. The first staff contains a sequence of eighth notes, followed by a measure with a quarter note and a half note, then a measure with a quarter note and a half note, and finally a measure with a quarter note and a half note. Above the final measure is a circled 'E' and a bracket labeled '(VAMP)' with an arrow pointing right. The second staff contains a sequence of eighth notes, followed by a measure with a quarter note and a half note, then a measure with a quarter note and a half note, and finally a measure with a quarter note and a half note. Below the final measure is the text 'ON CUE' with an arrow pointing right.

A series of seven empty musical staves, each consisting of five horizontal lines.

Drums

SOUL MAN

MODT. BLUES ROCK

$\text{♩} = 116$

(S) (Cym) (H.HAT) (B.D.) (A) (PLAY 3 TIMES)

4 4 3

(B) 4 6 8 PLAY 7 MORE of SAME

(Cym) (REPEAT 2's) (CHOKE) (C) (H.HAT) 4 MORE

(D) (Cym) (B.D.) 4

(E) (H.H.) (VAMP) → 2

(Rim shot) ON CUE

1. & 2. ALTO

SOUL MAN

MED. BLUES ROCK = 116

3 (UNIS) 5

(A) PLAY 3x's-TACET 4th X.

(B) (PLAY ALL X'S)

(REPEAT 2x's.) sp <

(C) sp <

(D)

(E) (VAMP ->

(ON CUE: ->

1 & 2. ALTO

SOUL MAN

MED. BLUES ROCKS=116

3 (UNIS) 5

(A) PLAY 3X'S-TACET 4STX.

(B) PLAY ALLX'S

(REPEAT 2X'S.) ^ sp<

(C) sp<

(D)

(E) (VAMP →)

ON CUE: →

1. & 2. TENOR

SOUL MAN

MODT. BLUES ROCK $\text{♩} = 116$

5

(A) PLAY 3x'S
TACET 1x.

(B) (PLAY ALL X'S)

(REPEAT 2x'S)

(C) 4/4

(D)

(E) (VAMP)

(F) CUE:

1. TRUMPET

SOUL MAN

MOD. BLUES ROCK 2=11b

5

(A) (3 TIMES - TAKE 1st X.)

(B) (PLAY ALL X'S.)

(4) (REPEAT TWICE)

(C)

(D) (E) (VAMP)

(ON CUE)

2. TRUMPET

SOUL MAN

MODT. BLUES ROCK 2=116

5

A (PLAY 3 X'S - TACET 1ST X.) (3)

B (PLAY ALL X'S) (4)

(REPEAT TWICE) fp

C

D

E (VAMP) ff

(ON WE) >

VOCAL LEAD

SOUL MAN

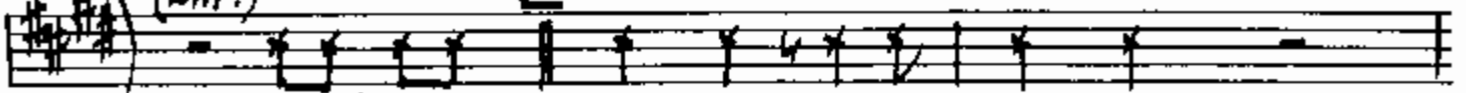
MIDT. BLUES ROCK 4/16

(A)

VOCAL E / SOUL MAN

RAP:

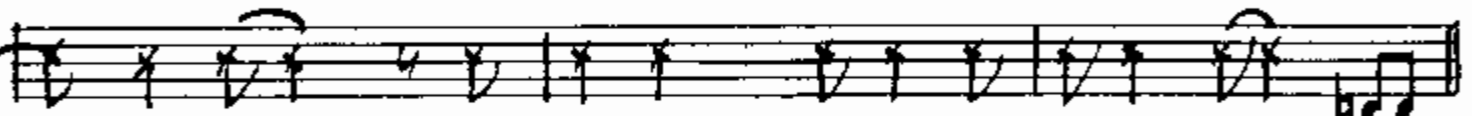
(A3)



LIS-TEN, I WAS BROUGHT UP ON A SIDE STREET

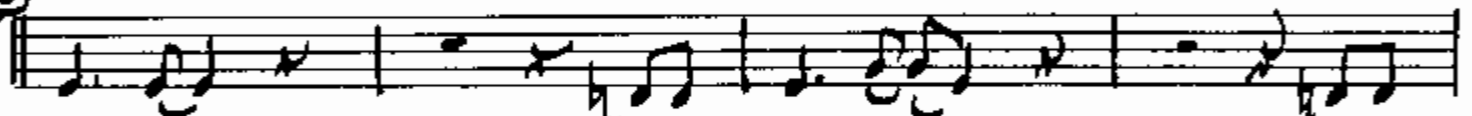


LEARNED HOW TO LOVE BE-FORE I COULD EAT ED-U-CAT-ED FROM

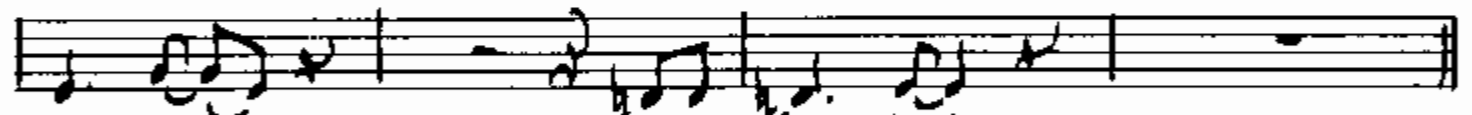


GOOD STEEL WHEN I START LOV-IN' I JUST CAN'T STOP I'M A

(B)

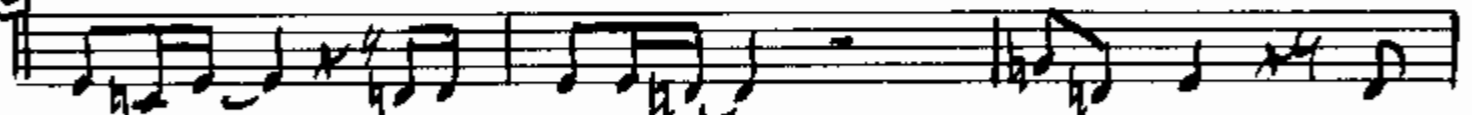


SOUL MAN I'M A SOUL MAN I'M A

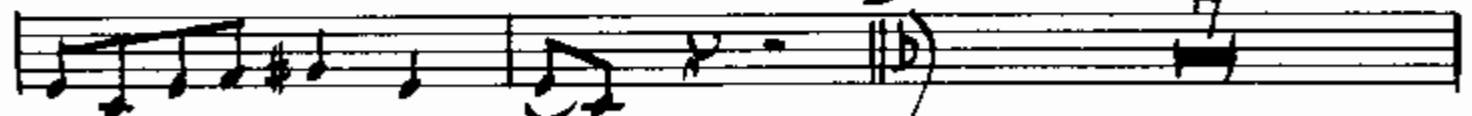


SOUL MAN I'M A SOUL MAN

(C)

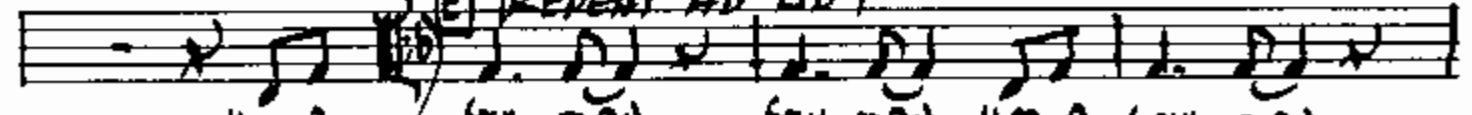


GRAB A ROPE AND I'LL PULL YOU IN GIVE YOU HOPE AND

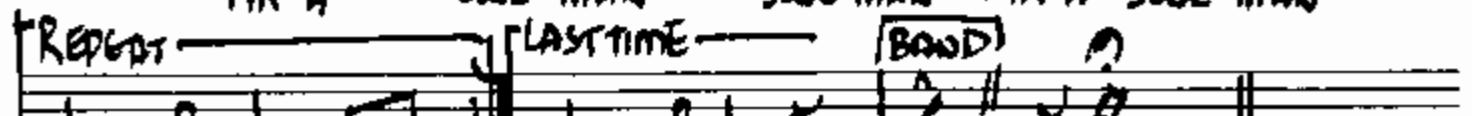


BE YOUR ON-LY BOY-FRIEND YEAH

(E) REPEAT AD LIB



I'M A SOUL MAN SOUL MAN I'M A SOUL MAN



SOUL MAN YOU'RE A SOUL MAN

(BAND)

VOCAL LEADS

SOUL MAN

MOD. BLUES ROCK 4/16

(A)

COM-IN' TO YA' ON A DUST-Y ROAD GOOD LOV-IN' I GOT A

TRUCK LOAD AND WHEN YOU GET IT YOU GOT SOMETHIN' SO DON'T WOR-RY 'CAUSE

I'M COM-IN' I'M A SOUL MAN I'M A SOUL MAN

I'm A SOUL MAN I'm A SOUL MAN

WHAT I GOT THE HARDWAY AND I'LL MAKE IT BETTER EACH AND

EV-RY DAY SO HON-EST DON'T YOU FRET 'CAUSE YOU AIN'T SEEN

NOW-IN' YET- I'M A SOUL MAN I'M A SOUL MAN

PLAY IT (NAME OF GUITAR PLAYER) I'm A SOUL MAN

VOCAL E / SOUL MAN

(RAP:) (A3)
Musical staff with notes and rests.

LIS-TEN, I WAS BROUGHT UP ON A SIDE STREET

Musical staff with notes and rests.

LEARNED HOW TO LOVE BE-FORE I COULD EAT ED-U-CAT-ED FROM

Musical staff with notes and rests.

GOOD STUCK WHEN I START LOV-IN' I JUST CAN'T STOP I'M A

(B)

Musical staff with notes and rests.

SOUL MAN I'M A SOUL MAN I'M A

Musical staff with notes and rests.

SOUL MAN I'M A SOUL MAN

(C)

Musical staff with notes and rests.

GRAB A ROPE AND I'LL PULL YOU IN (D) GIVE YOU HOPE AND

Musical staff with notes and rests.

BE YOUR ON-LY BOY-FRIEND YEAH

Musical staff with notes and rests.

I'M A SOUL MAN SOUL MAN I'M A SOUL MAN

Musical staff with notes and rests.

SOUL MAN YOU'RE A SOUL MAN

REPEAT

LAST TIME

(BAND)